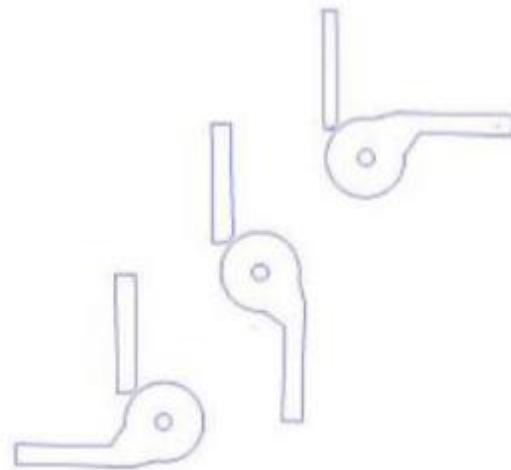
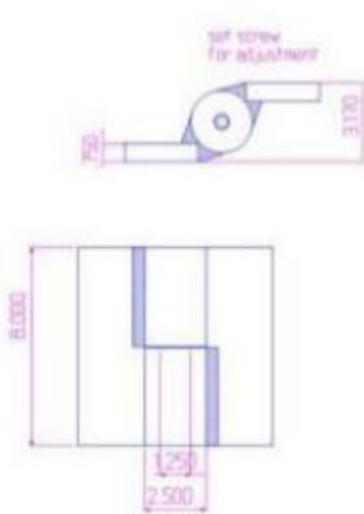
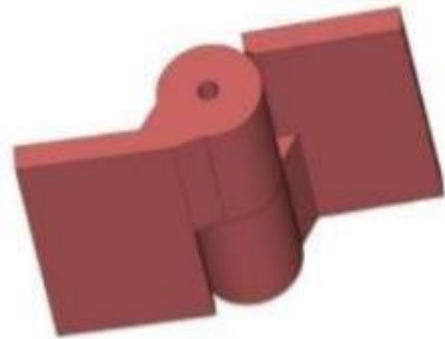


## 8" x 7 7/8" Carbon Steel Half Mortise Hinge

Model Number: 2125RH-GALV Half Mortise

Price: £ 972

- Application: Half Mortise
- Finish: Hot Dipped Galvanized
- Material Type: Carbon Steel
- Maximum Door Weight: 8,000 LBS
- Maximum Radial Load: 3,300 LBS
- Mount: Weld-On or Bolt-On
- Approximate Width: 7 7/8 "
- Height: 8"
- Weight: 23 lbs.
- Bearing Type: Thrust and Needle bearings
- Service: Heavy Duty



**Kiesler Machine Inc**

**Contact Info :**  
info@kieslermachine.uk

Smoother Than The Rest  
Guaranteed!

Data Provided For Reference Only.

Disclaimer: This drawing is property of Kiesler Machine Inc, Kieslermachine.com. It is owned with the understanding that it will in no way be used in a manner which is harmful to Kiesler Machine Inc.